

# Installation of ISS Smart Flow

---

*Describes the needed steps and their correct order, to install successfully  
ISS Smart Flow on your PC*

## Table of Contents

<a href="#">Installation of the Product.....</a>	<a href="#">2</a>
<a href="#">Downloading .NET Framework.....</a>	<a href="#">2</a>
<a href="#">Installation of .NET Framework.....</a>	<a href="#">3</a>
<a href="#">Finishing Smart Flow Installation.....</a>	<a href="#">5</a>
<a href="#">Establishing Connection to the Smart Flow Database.....</a>	<a href="#">6</a>
<a href="#">Windows Jet Database.....</a>	<a href="#">7</a>
<a href="#">Connecting to the Database.....</a>	<a href="#">7</a>
<a href="#">Creation of Needed Smart Flow Databases.....</a>	<a href="#">9</a>
<a href="#">Product Licensing.....</a>	<a href="#">9</a>
<a href="#">The First Log-on to the System.....</a>	<a href="#">9</a>

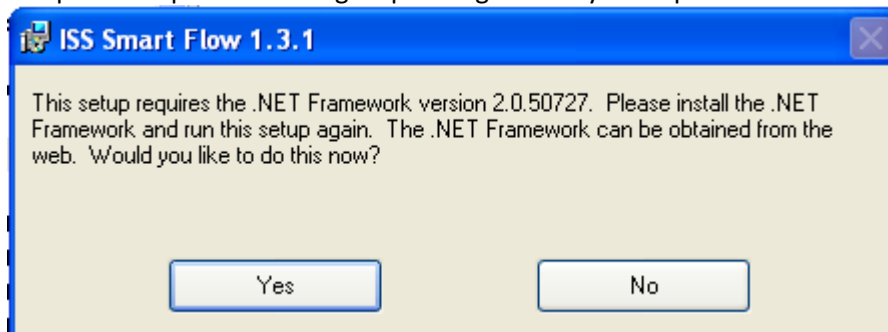
## Installation of the Product

Please follow the steps below to install *ISS Smart Flow* on your PC:

1. Start the *Smart Flow* installation by unzipping and running the setup file *SmartFlowSetupFreeXXX.msi* or *SmartFlowSetupProXXX.msi*.
2. If you get the following message, press the button *Run* to continue.



3. If you get the following message, this means that you don't have the required *.Net Framework* version 2.0 or higher installed on your PC. In this case press the button *Yes* to download and install the required *.Net* framework first. If you don't get such a message, please skip the following steps and go directly to step 10.




### Downloading .NET Framework

4. The web browser will open the following page, to allow you to select the needed *.Net Framework* version. Please select the link corresponding to your platform – in most cases this would be '*Download x86 version*'

### SDKs, Redistributables & Service Packs

Stay up-to-date with these downloadable service packs, updates, samples, and related components for the .NET Framework.



[Order the .NET Framework on DVD](#)  
Need the .NET Framework on DVD? We'll be shipping the Framework to customers in the US on DVD (International customers must contact their local Microsoft subsidiary.) You can order the disks today.

---

#### .NET Framework Version 2.0 Redistributable Package

Download the most recent update to the Microsoft .NET Framework and get everything you need to run applications developed using the .NET Framework.

- [Download x86 version](#)
- [Download x64 version](#)
- [Download IA64 version](#)


#### .NET Framework Version 2.0 Software Development Kit

This SDK includes everything you need to write, build, test, and deploy .NET Framework applications—documentation, samples, and command-line tools compilers. You must install the .NET Framework version 2.0 Redistributable Package prior to installing the SDK.

- [Download x86 version](#)
- [Download x64 version](#)
- [Download IA64 version](#)

- Then the web page for downloading the selected .Net version will show up. Press the button *Download* to start downloading the installation of .Net Framework

## Microsoft .NET Framework Version 2.0 Redistributable Package (x86)



### Brief Description

The Microsoft .NET Framework version 2.0 (x86) redistributable package installs the .NET Framework runtime and associated files required to run applications developed to target the .NET Framework v2.0.

### On This Page

- [Quick Details](#)
- [System Requirements](#)
- [Additional Information](#)
- [What Others Are Downloading](#)
- [Overview](#)
- [Instructions](#)
- [Related Resources](#)
- [Related Downloads](#)

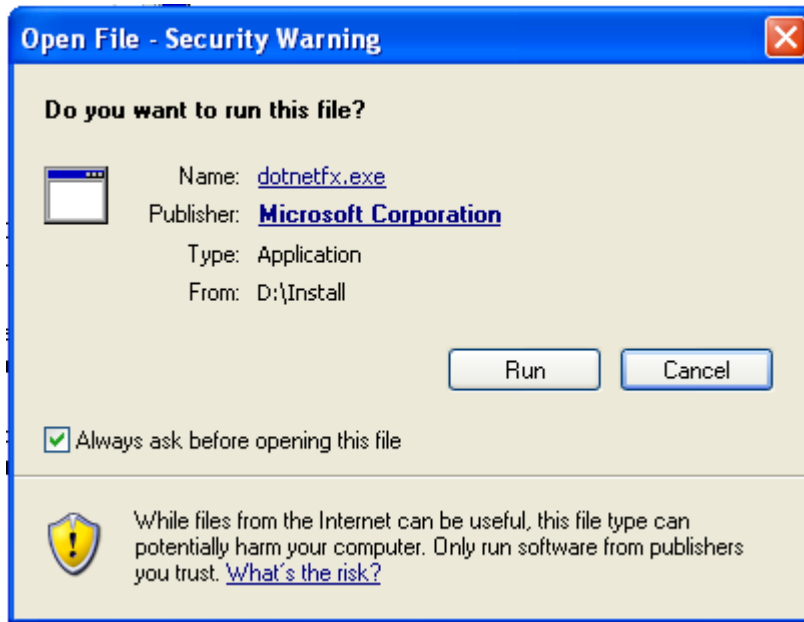
**Download**

### Quick Details

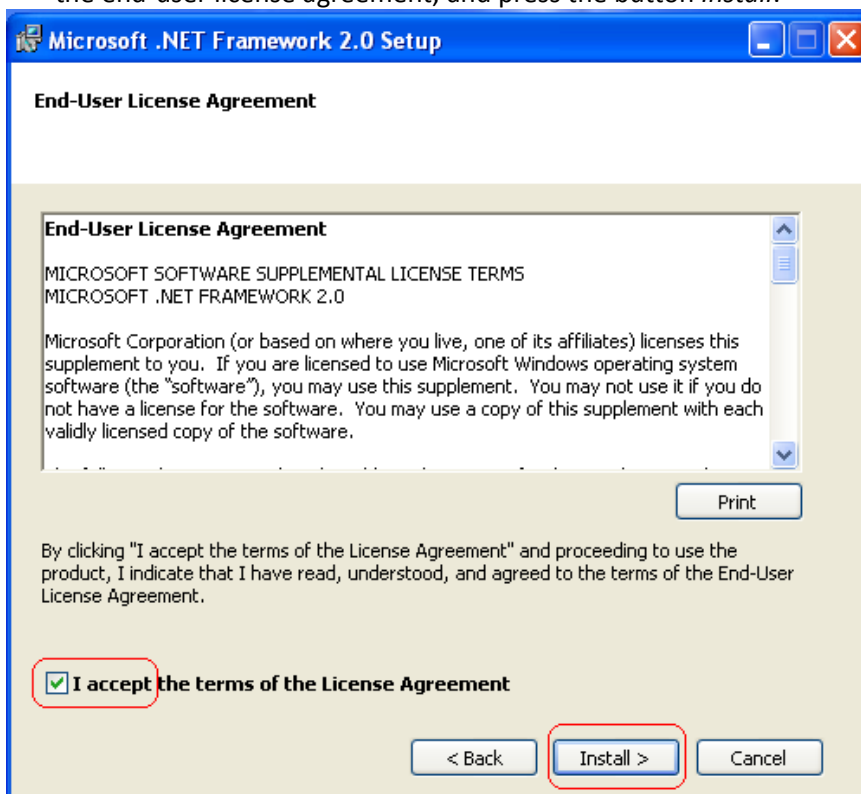
File Name:	dotnetfx.exe
Version:	2.0
Date Published:	1/22/2006
Language:	English
Download Size:	22.4 MB
Estimated Download Time:	<input type="text" value="Dial-up (56K)"/> 55 min
Change Language:	<input type="text" value="English"/> <input type="button" value="Change"/>

### Installation of .NET Framework

- Start the downloaded file (*dotnetfx.exe*). If you get the following message, press the button *Run* to continue.



7. Press the button *Next* on the welcome screen. On the license agreement screen accept the end-user license agreement, and press the button *Install*.



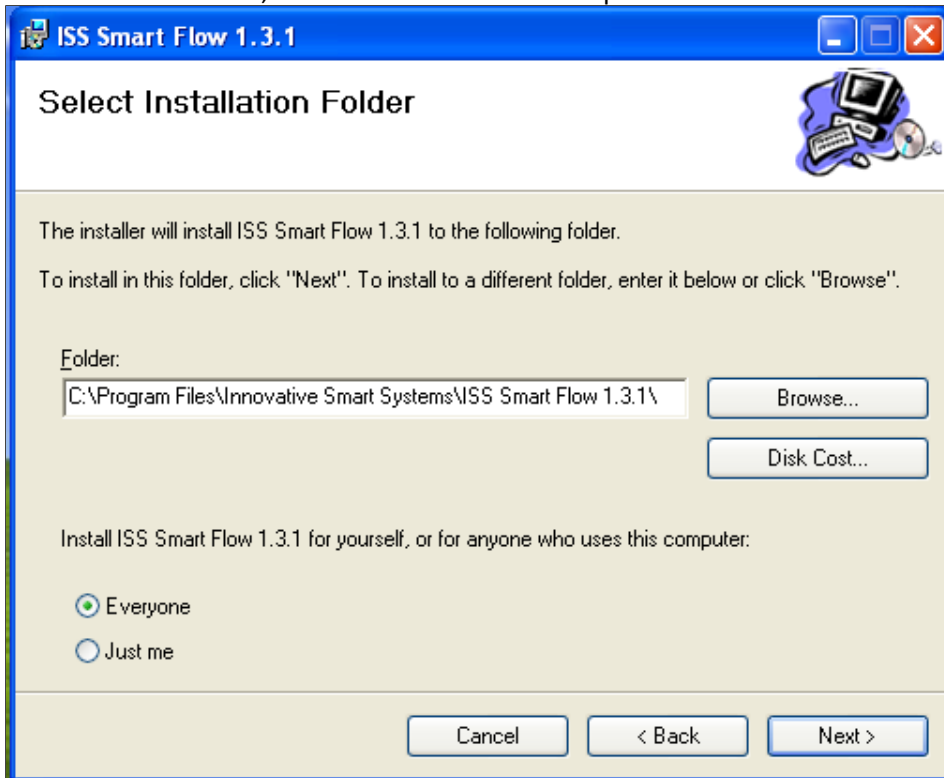
8. The installation of *.Net Framework* will proceed. At the end the *.Net Framework* will be installed on your PC.

9. Start again the *Smart Flow* installation (run the setup file *SmartFlowSetupFreeXXX.msi* or *SmartFlowSetupProXXX.msi*). If you get the following message, press the button *Run* to continue.

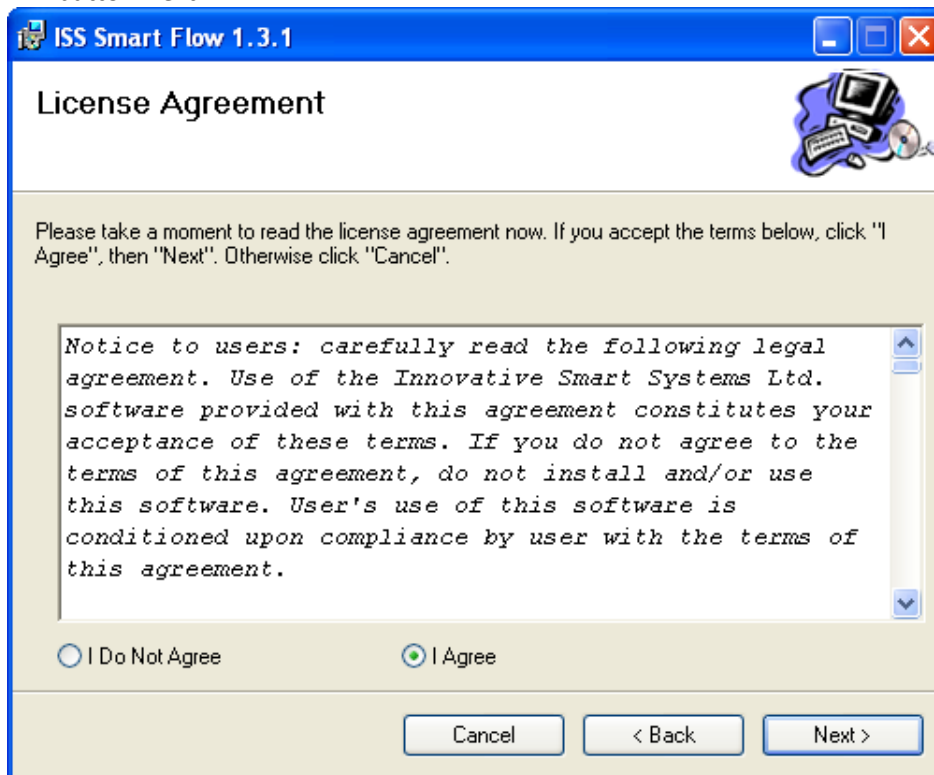


### Finishing Smart Flow Installation

10. On the welcome screen click the button *Next*. On the next screen accept the default installation folder, or choose a new one. Then press the button *Next*.



11. On the license agreement screen, check "I agree" radio button, and then press the button *Next*.

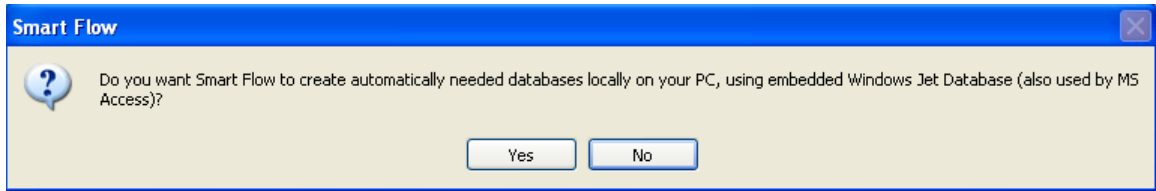


12. On the installation confirmation screen press the button *Next*. The installation will proceed without any more interactions. At the end *ISS Smart Flow* will be installed on your PC.
13. After successful installation, the following icon will appear on your desktop.



## Establishing Connection to the Smart Flow Database

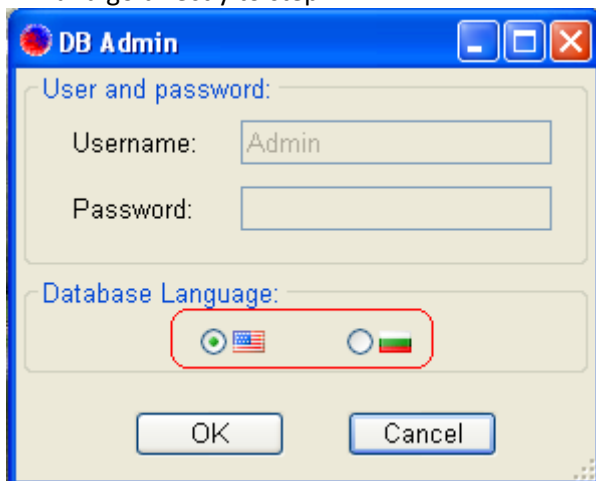
14. The next step is to choose the database server (or install a new one), which will be used by *Smart Flow* to create needed databases for data and documents.
15. Start *ISS Smart Flow*. If you are running the product for the first time, the following question will pop up. This will not happen if you're running a 64-bit OS, as the *Windows Jet Database* is not supported under 64-bit systems. In this case go directly to step 17.



### Windows Jet Database

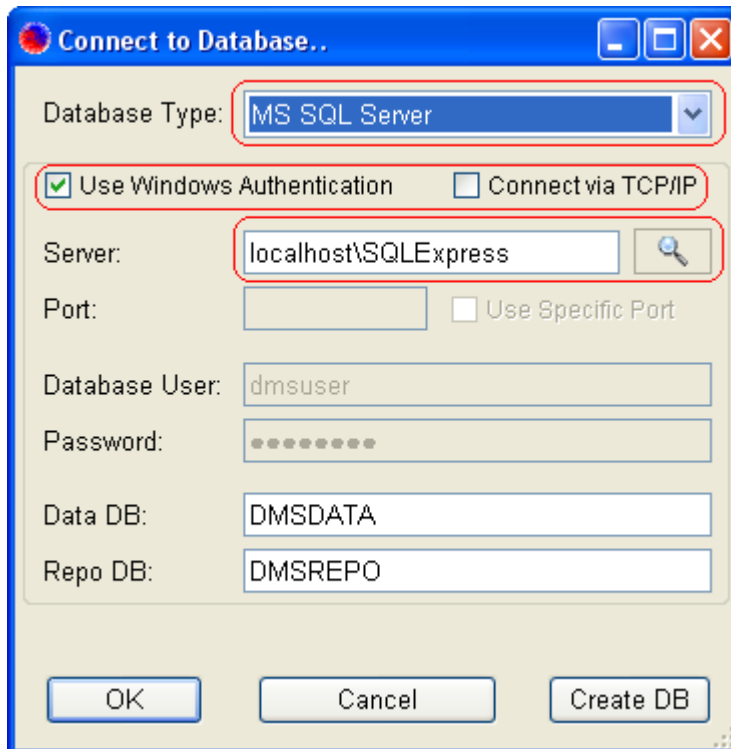
16. If you answer *Yes*, *Smart Flow* will create needed databases by using the *Windows Jet Database Engine*. This database server is embedded into *Windows*, and does not require additional installations. It is easier to use it, when you would like to evaluate *ISS Smart Flow*, or when you use the free version of the product.

Choose the language for the data in the newly created databases. Then press the button *OK*. The needed *Smart Flow* databases will be created. Please skip the following steps and go directly to step 21.



### Connecting to the Database

17. If you have answered *No*, or the creation of *Windows Jet Engine* databases has failed for any reason, the screen for setting-up connection to database server will show up.



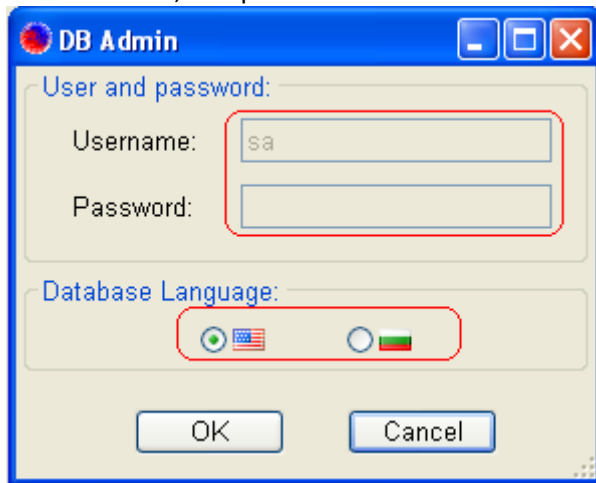
18. If you already have a database server of type *MS SQL 2005 / MS SQL 2000 / MSDE 2000*, or *Firebird SQL 2.0 / 1.5* installed, you can skip this step. If you don't, now you can select, download and install one of the following free-of-charge database servers. Of course you can also use the other editions of these SQL servers. All manuals mentioned below can be found at: <http://www.iss-bg.com/support.html>
- a. *MS SQL Server 2005 (Express Edition)* – for more information about needed installation and configuration procedures look at the manual '*How to install Smart Flow Database Locally Using MS SQL Server 2005 Express Edition*'.
  - b. *MS SQL Server 2000 (Desktop Edition)* – for more information about needed installation and configuration procedures look at the manual '*How to install Smart Flow Database Locally Using MS SQL Server 2000 Desktop Edition*'. **Do mind that that MSDE 2000 is no longer supported under Windows Vista. In this case it is better to use the newer version - MS SQL Server 2005 Express Edition.**
  - c. *Firebird 1.5 / 2.0 SQL Server* – for more information about needed installation and configuration procedures look at the manual '*How to install Smart Flow Database Locally Using Firebird 2.0 SQL Server*'.
19. On *Smart Flow's Connect to Database* screen select the SQL server type you're using. The default connection settings are filled-in, but nevertheless please check them and modify them if needed. Pay special attention to the server name. If you're using



database server located on another PC, enter the machine name or IP address for server name, and check if the other connection settings are correct. Press the button *OK*.

### Creation of Needed Smart Flow Databases

20. If this is the first time usage of *ISS Smart Flow*, you will be asked whether you like to create the needed databases first. If yes, enter the corresponding database admin user name and password (if needed), select the language you like to use for the data in your databases, and press the button *OK*. The needed *Smart Flow* databases will be created.



### Product Licensing

21. If you are using the professional version of *Smart Flow*, at this point the *Product License* dialog will show up, and you will be asked to request or import your trial or commercial license. More about trial and commercial licenses and details about how to request them you can find in the manual "*Trial and Commercial Licenses*". The manual can be found at: <http://www.iss-bg.com/support.html>

### The First Log-on to the System

22. If you are using the free version, the main screen will show up directly, because this version is limited to one single user. If you're using the professional version, the user-login dialog will show up first. In this case please enter the user name *admin*, and the password *issvarna*.

If this is the first run of *Smart Flow*, the user name and password will be automatically filled-in for you. You can also choose the language of the *Smart Flow* graphical interface. Then press the button *OK*. If login information is correct the *Smart Flow* main screen will show up. Do not forget to change the password of user *admin* – use the menu *Manage / Change Password*.

