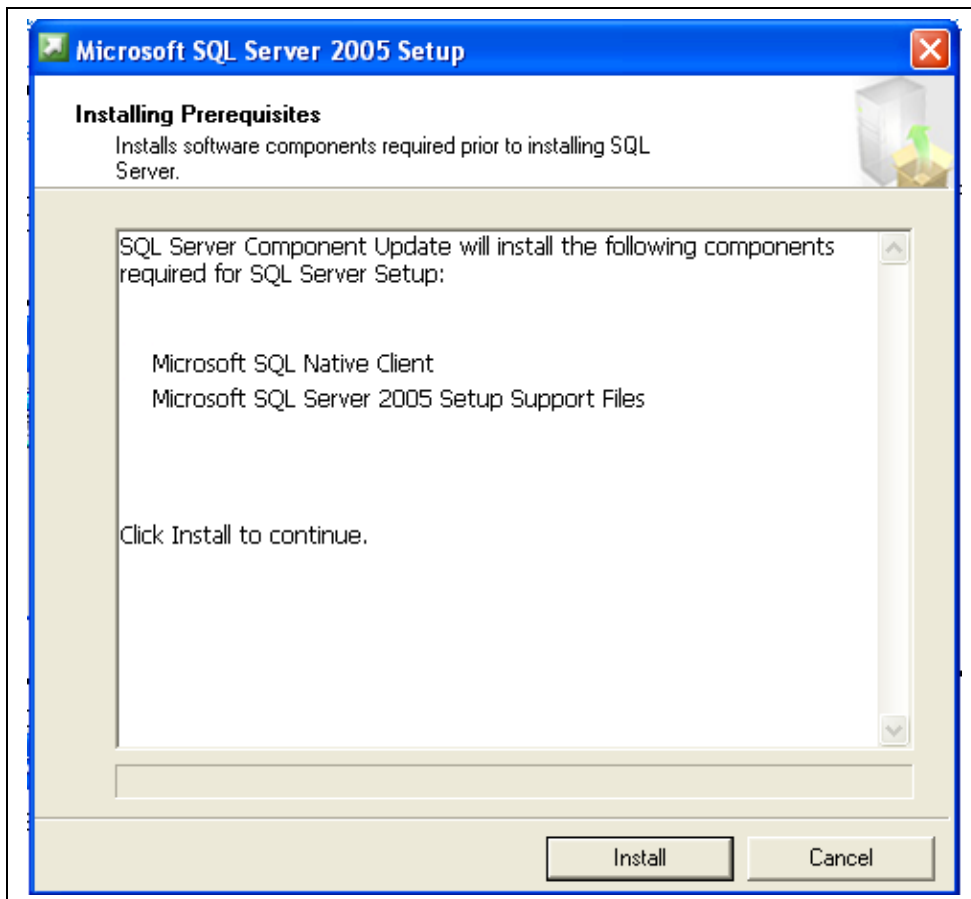


## How to Install Smart Flow Database

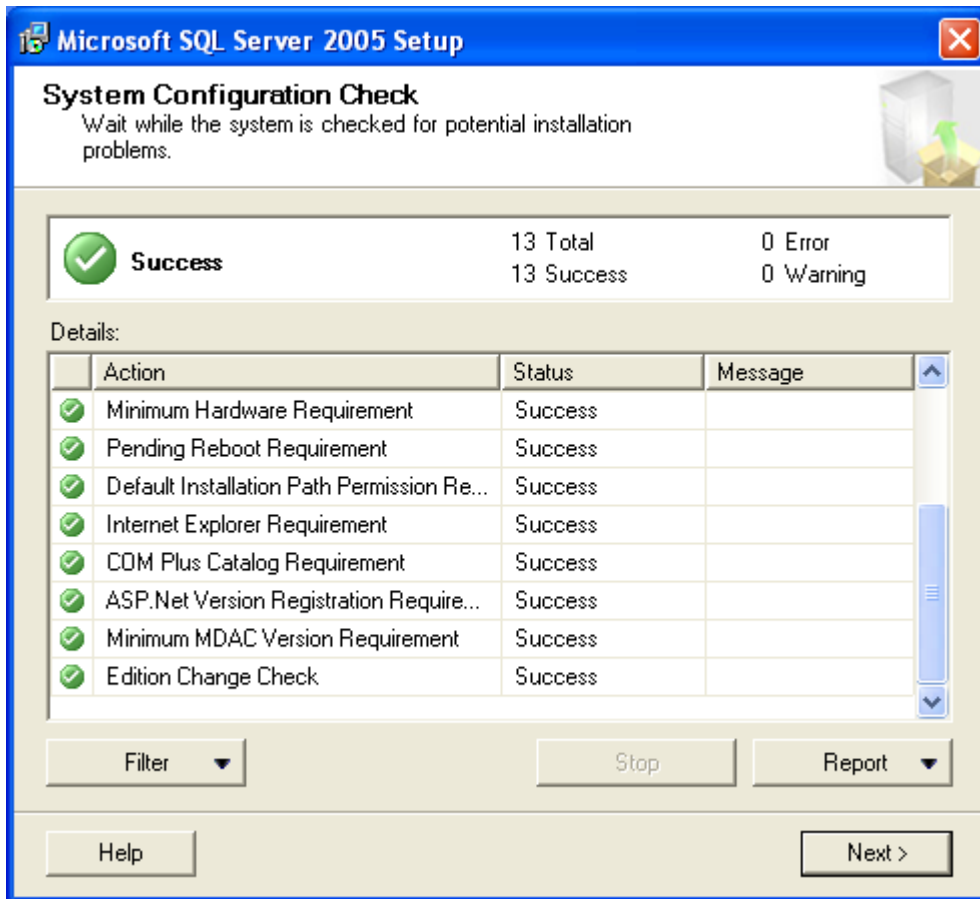
/MS SQL Server 2005 Express Edition/

To install locally the free *MS SQL Server 2005 Express Edition* and use it with *ISS Smart Flow* application, follow these steps:

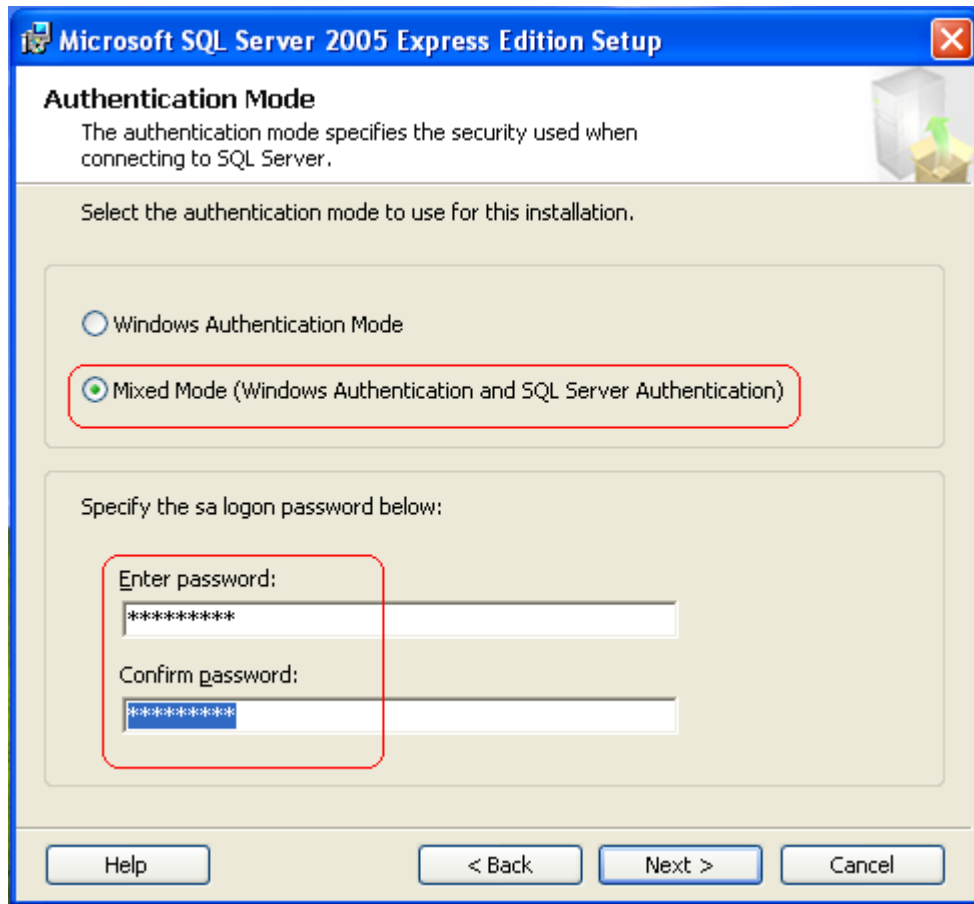
1. Download *MS SQL Server 2005 Express Edition* using the following link:  
<http://www.microsoft.com/downloads/details.aspx?FamilyID=31711d5d-725c-4afa-9d65-e4465cdf1e7&DisplayLang=en>
2. Run the downloaded file. This will unzip the actual installation of *MS SQL Server 2005 Express Edition* in a temporary directory and start it.
3. Accept the license agreement. Then accept installation of needed prerequisites. Click the *Install* button.



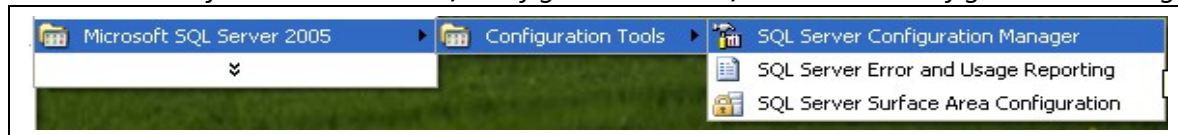
4. Next the setup will check your configuration for potential installation problems, and show you the results. If everything is ok, continue with *Next* button.



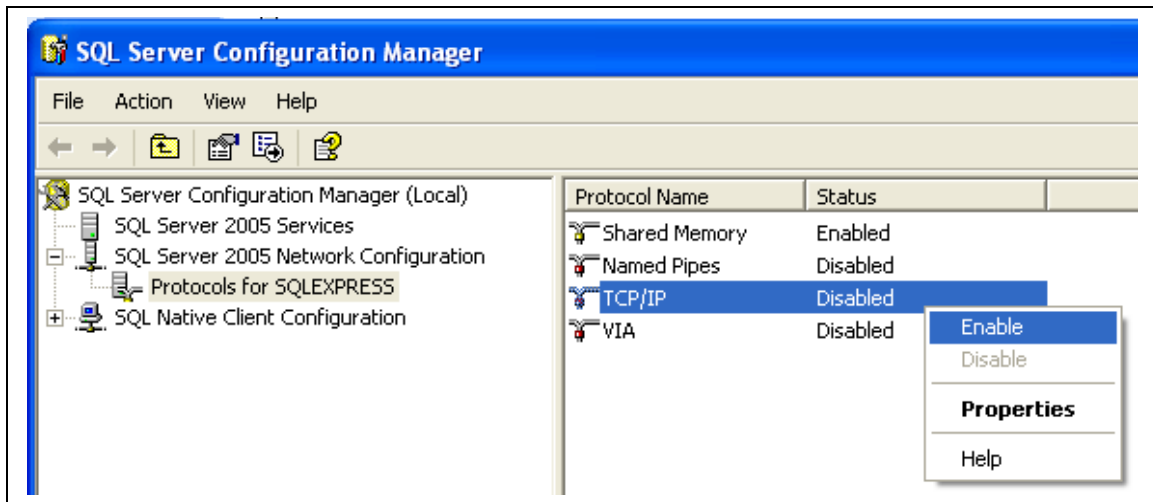
5. Provide needed registration information, and accept the default components (features) to install.
6. For authentication mode you better select *Mixed Mode*. Provide password for database admin user, named 'sa'. Remember this password; you can need it later for *Smart Flow* databases creation.



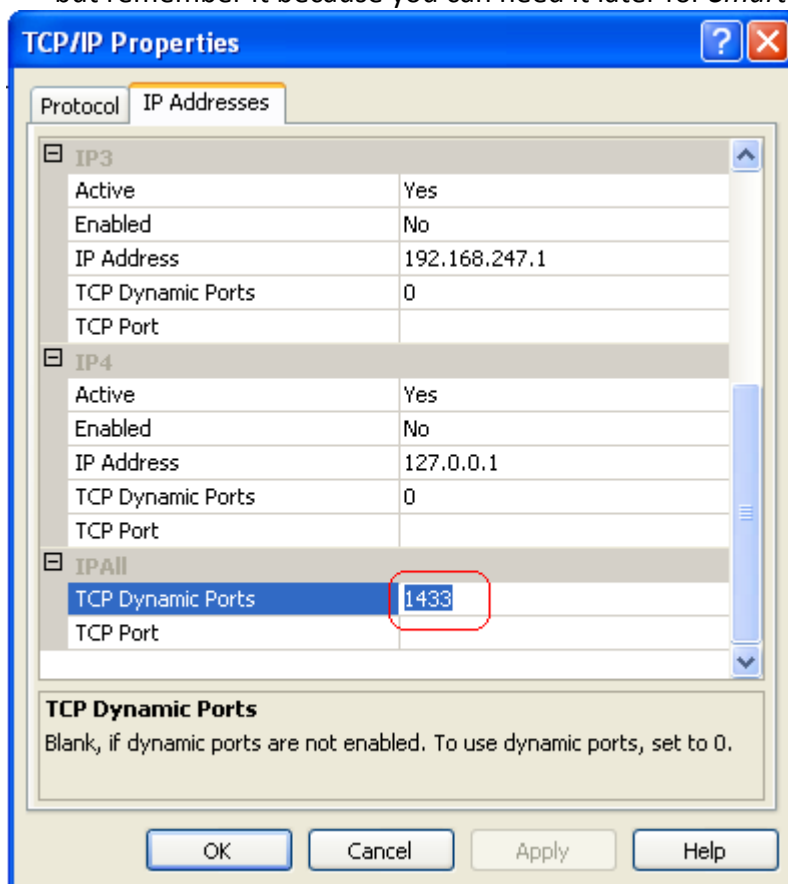
7. Accept the configuration options on next screens with their default values, or change them in the way you like. Finally click the *Install* button on *Ready to Install* screen. The installation will proceed.
8. Finish the installation. *SQL Server 2005 Express* is now running. You don't need to restart your PC.
9. If you don't want to allow TCP connections to *MS SQL Server 2005* you can skip following steps and go directly to step 13. Otherwise from the *Start* menu select *Microsoft SQL Server 2005 / Configuration Tools / SQL Server Configuration Manager*.



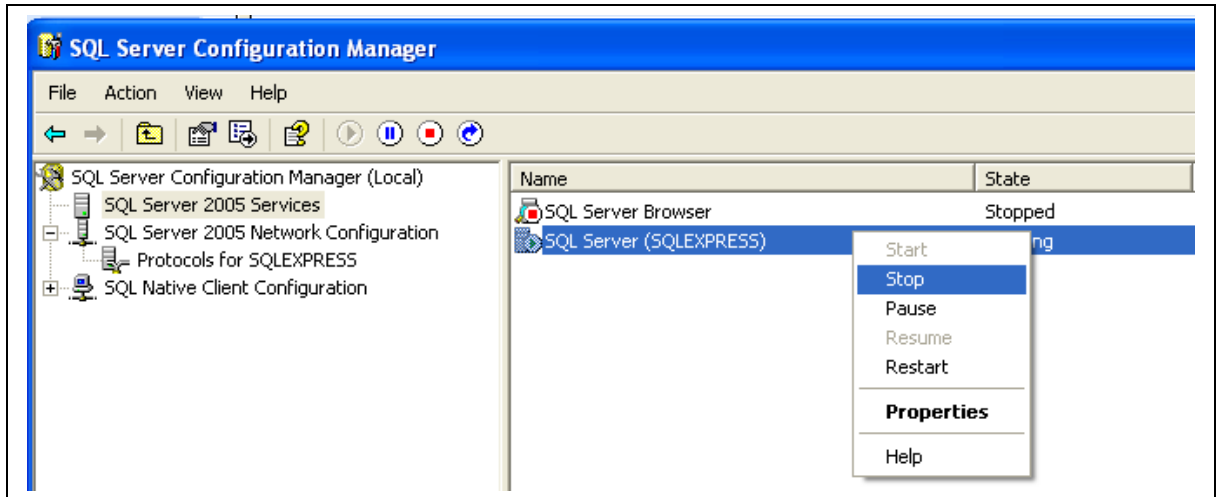
10. Expand *SQL Server 2005 Network Configuration*, select node *Protocols for SQLEXPRESS*, right-click on *TCP/IP* protocol on the right (which should be initially disabled) and select *Enable* from the context menu. The configuration manager notifies you that changes will be applied when the SQL server is restarted. We will do this later



11. If you don't want to use specific port for MS SQL Server connections, you can skip this step. Otherwise double click on *TCP/IP* protocol. Scroll down if needed, until you get to *IPAll* section. Change the *TCP Dynamic Ports* setting to 1433. This fixes the SQL Server port to 1433. If this port is not available, try setting it to some other number, but remember it because you can need it later for *Smart Flow* databases creation.



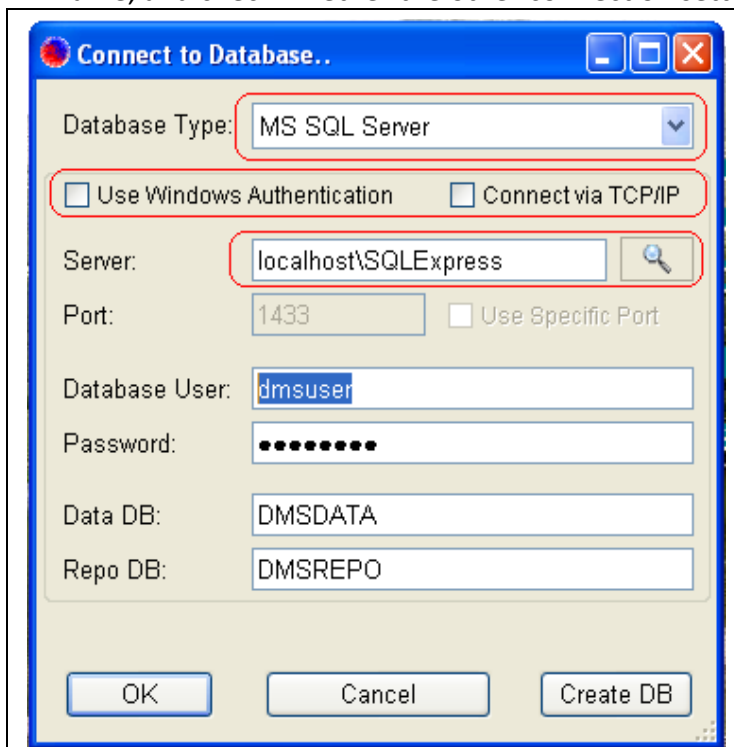
12. Finally we need to restart SQL Server, so new settings take effect. On *SQL Server Configuration Manager* main screen select *SQL Server 2005 Services*, right-click *SQL Server (SQLEXPRESS)* on the right, and select *Stop* from the context menu. This will stop the server. Right right-click again *SQL Server (SQLEXPRESS)* on the right, and select *Start* from the context menu. This will restart the SQL Server.



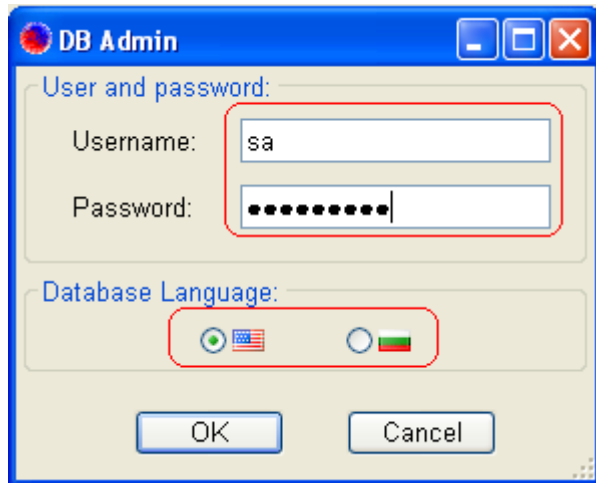
13. Click on desktop *ISS Smart Flow* icon to run *Smart Flow* application for the first time:



14. On *Smart Flow* database connection screen select “*MS SQL Server*” as database type. The most likely connection settings are filled in for you, but you better check them and change if needed. Pay special attention to the server name. If you’re using database server located on another machine, type its name or IP address for server name, and check whether the other connection settings are valid.



15. If this is the first time use of *Smart Flow* for you or your organization, you first have to create the needed databases. If you're using your own PC for database server, then click the button *OK* and you will be asked whether to create needed databases first. Answer to that question with *Yes*. If you are using another machine for a database server, check the database connection settings and click the button *Create DB*. Enter the corresponding database admin user name and password (if needed), select the language you like to use for the database, and click the button *OK*. This will create all needed *Smart Flow* databases and will forward you to login screen.



16. On login screen type in user name *admin* and password *issvarna*, in order to enter *ISS Smart Flow* for the first time. You can also choose the language to use for *Smart Flow* graphical interface. Then click the button *OK*. If everything is correct the *Smart Flow* main screen will appear. Do not forget to change *admin* password – use the menu *Manage / Change Password*.

