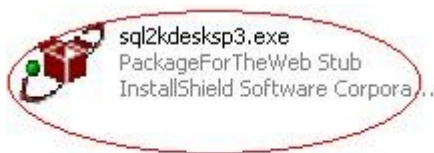


How to Install Smart Flow Database

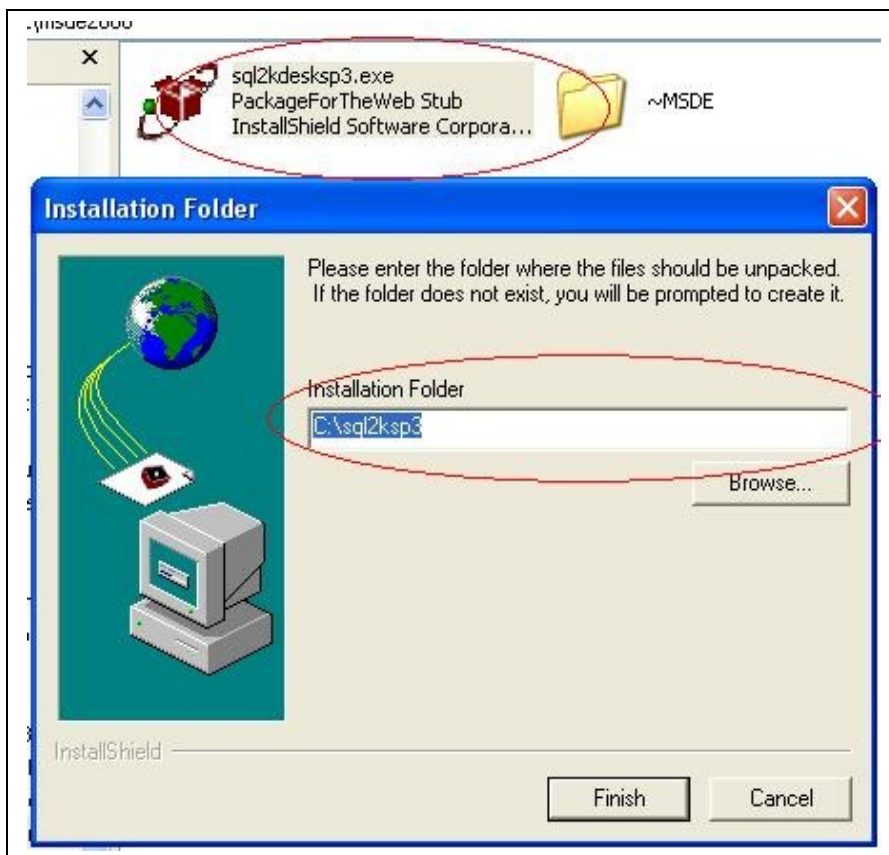
/MS SQL Server 2000 Desktop Edition/

To install locally the free *MS SQL Server 2000 Desktop Edition (MSDE 2000)* and use it with *ISS Smart Flow* application follow these steps:

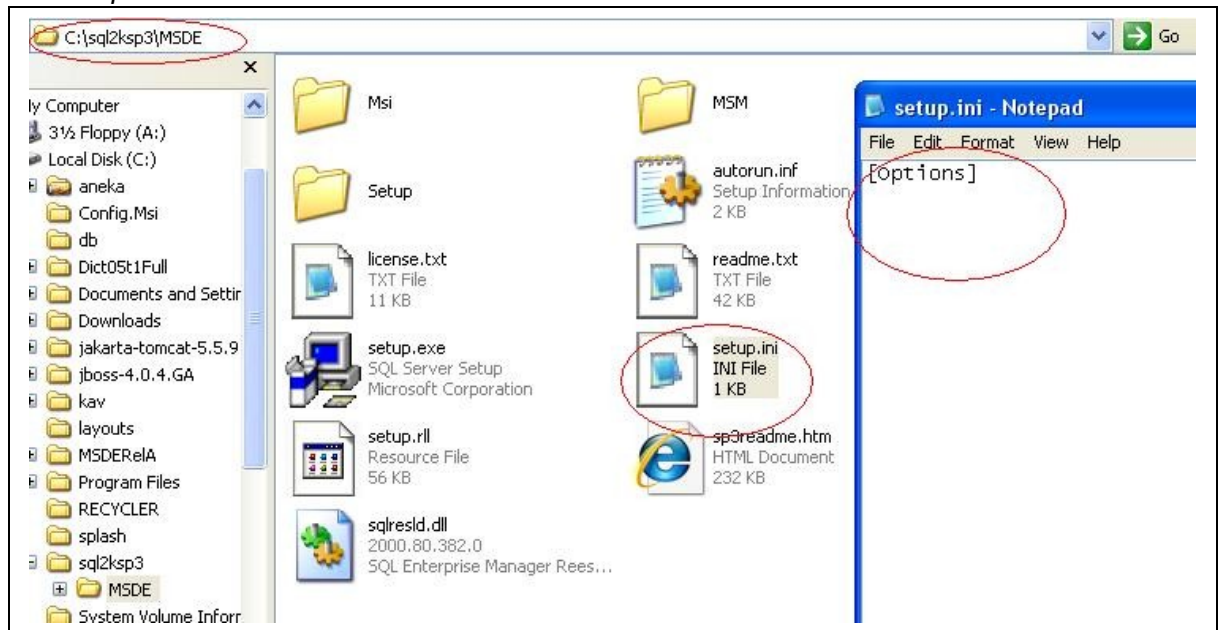
1. Download MS SQL Server 2000 Desktop Edition using the following link:
<http://download.microsoft.com/download/8/7/5/875e38ea-e582-4ee2-9485-b459cd9c0082/sql2kdesksp3.exe>
2. Run the downloaded file – it will unzip actual *MSDE* installation on your local drive.



3. Accept all default settings and click the *Finish* button. For instance the following installation will unzip *MSDE* setup into *C:\sql2ksp3* local directory.



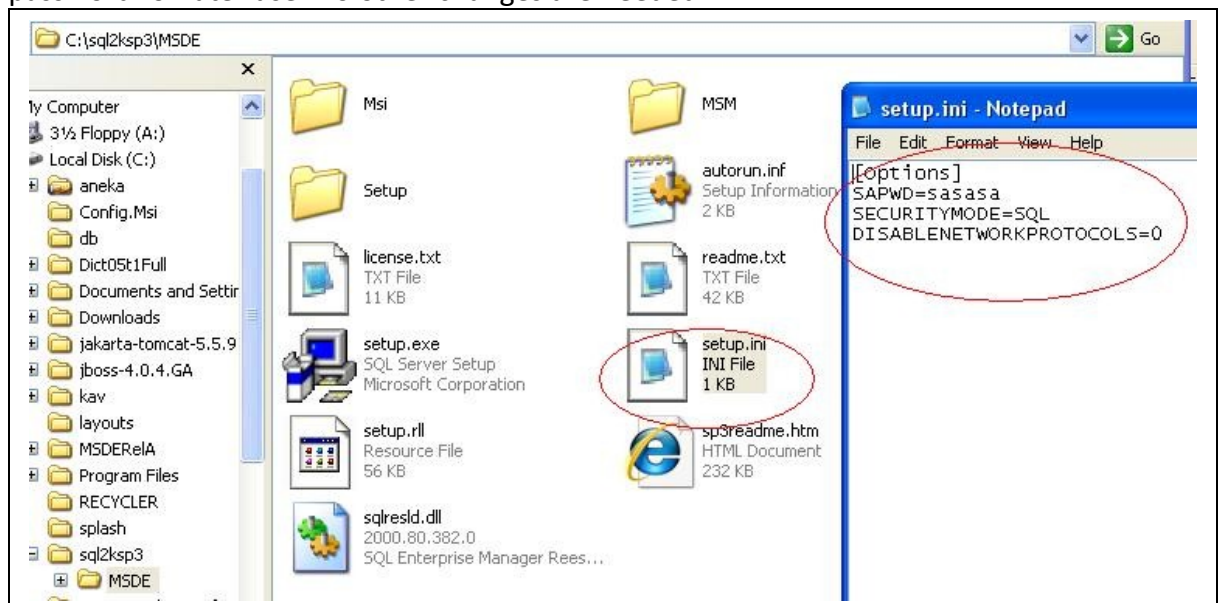
4. Run *Windows Explorer* and navigate to local directory as specified as *MSDE* installation directory above, then to its sub-directory named *MSDE*. Locate and open *setup.ini* file.



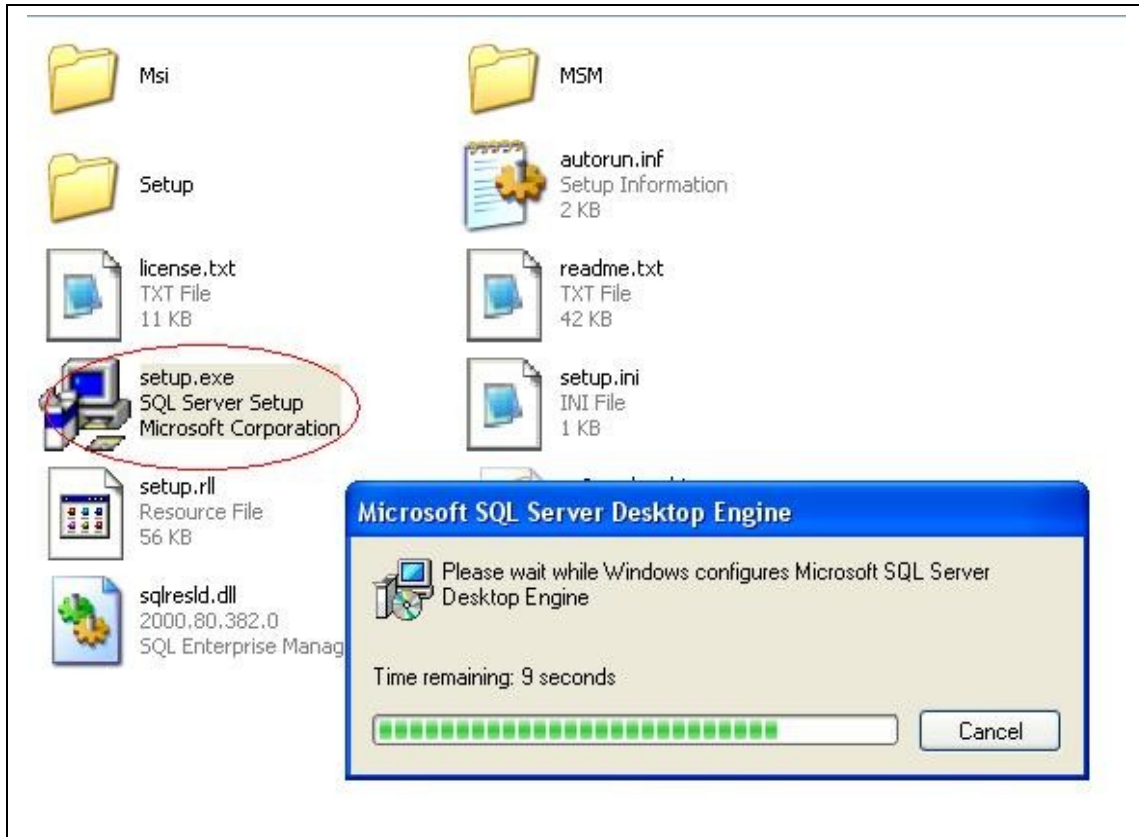
5. As you can see *setup.ini* contains only one row – *[Options]*. Add the following lines below *[Options]* line:

```
SAPWD=sasasa  
SECURITYMODE=SQL  
DISABLENETWORKPROTOCOLS=0
```

The first line contains the password for 'sa' MS SQL login (this is the administrative account for *MS SQL Server*). You can change it to whatever password you like, but remember this password for later use. No other changes are needed.



6. Save the *setup.ini* changes, and run *setup.exe* in the same directory. This will install *MSDE* without asking any questions, or user interaction



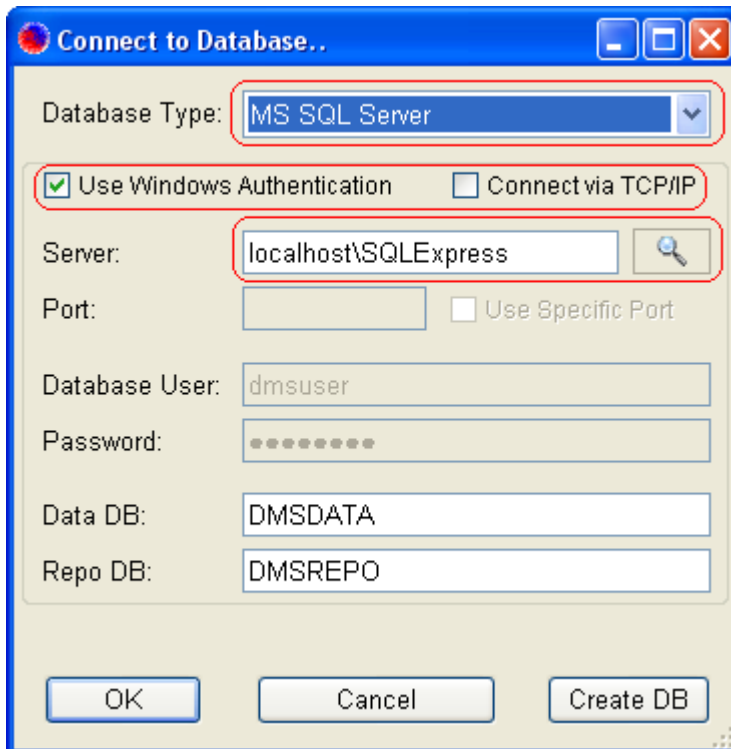
7. After installation finishes, restart the computer. Upon PC restart you will get status icon near your screen's bottom-right corner which shows if *MSDE* is running – green triangle means running, red square – stopped. *MS SQL Server Desktop Edition* should be running in order to perform successfully the next steps.



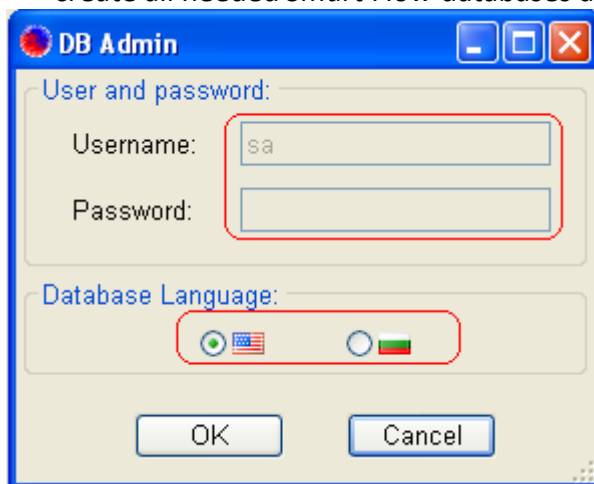
8. Click on desktop *ISS Smart Flow* icon to run *Smart Flow* application for first time:



1. On *Smart Flow* database connection screen select "*MS SQL Server*" as database type. The most likely connection settings are filled in for you, but you better check them and change if needed. Pay attention especially to server name setting. As you're not using *MS SQL 2005 Server Express Edition* on your PC, shorten the server name to 'localhost' only. If you're using database server located on another machine, type its name or IP address for server name, and check whether the other connection settings are valid.



2. If this is the first time usage of *Smart Flow* for you or your organization, you first have to create the needed databases. If you're using your own PC for database server, then click the button *OK* and you will be asked whether to create needed databases first. Answer to that question with *Yes*. If you are using another machine for a database server, check the database connection settings and click the button *Create DB*. Enter the corresponding database admin user name and password (if needed), select the language you like to use for the database, and click the button *OK*. This will create all needed *Smart Flow* databases and will forward you to login screen.



3. On login screen type in user name *admin* and password *issvarna*, in order to enter *ISS Smart Flow* for the first time. You can also choose the language to use for *Smart Flow* graphical interface. Then click the button *OK*. If everything is correct the *Smart Flow* main screen will appear. Do not forget to change *admin* password – use the menu *Manage / Change Password*.

