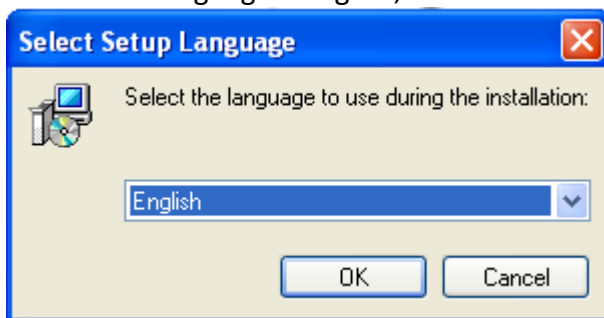


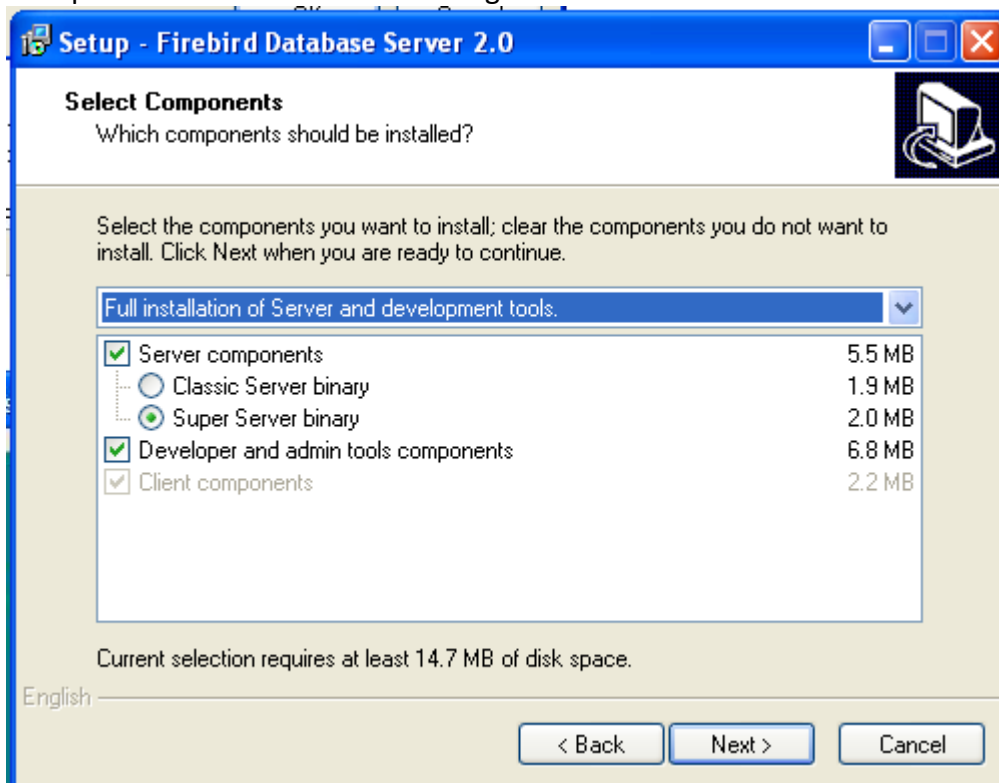
## How to Install Smart Flow Database /Firebird 2.0 SQL Server/

To install locally the free *Firebird 2.0 SQL Server* and use it with *ISS Smart Flow* application, follow these steps:

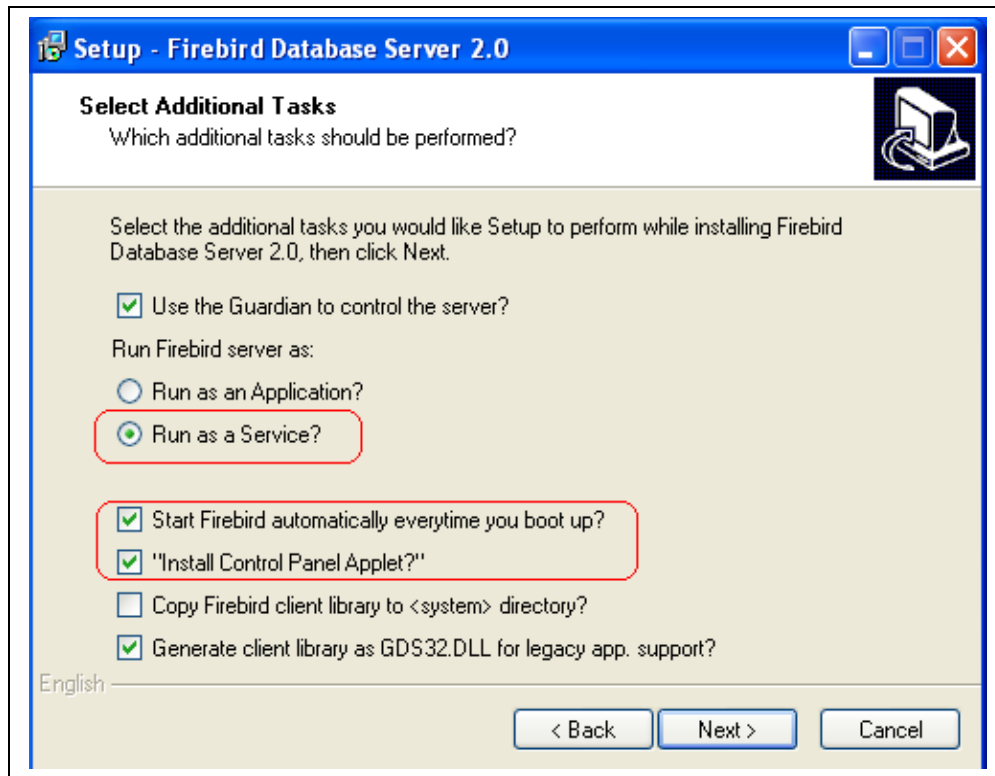
1. Download *Firebird 2.0 SQL Server* using the following link:  
<http://www.firebirdsql.org/index.php?op=files&id=engine>
2. Run the downloaded file. It will start installation of *Firebird 2.0 SQL Server*. Accept the default language – English, or select new one from the combo box.



3. Accept all default settings on the following screens. Be sure you *Super Server binary* option is checked on the following screen.



4. Be sure that Firebird will auto-run as service. Pay attention to the following screen.



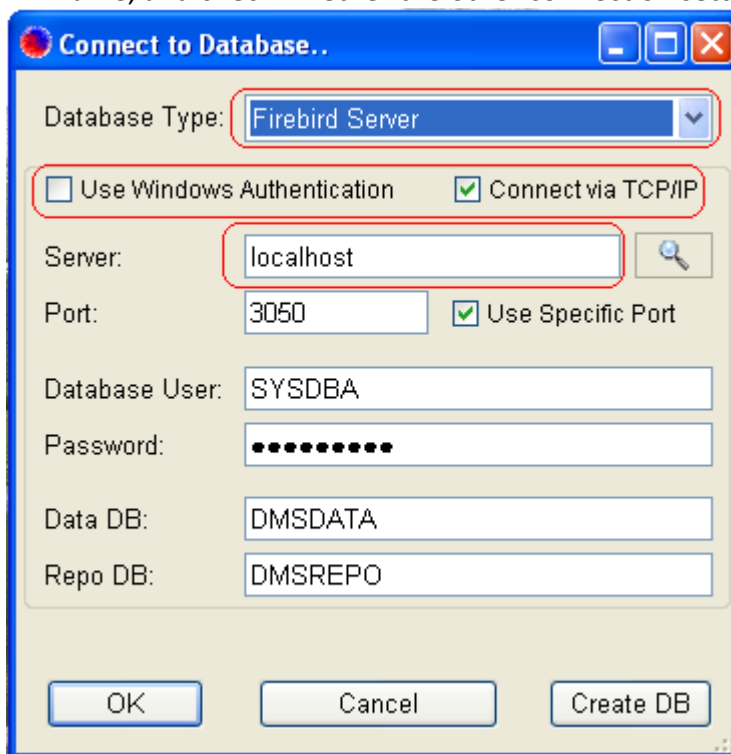
5. Finally click on *Install* button (on next screen) and installation will proceed.
6. On Completing the *Firebird Database Server Setup Wizard* leave the check box *Start the Firebird Service now* checked, and click the *Finish* button.



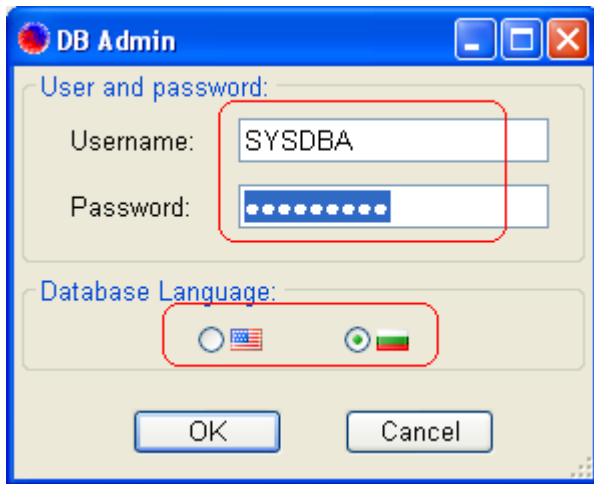
7. Click on desktop *ISS Smart Flow* icon to run *Smart Flow* application for first time:



8. On *Smart Flow* database connection screen select “*Firebird Server*” as database type. The most likely connection settings are filled in for you, but you better check them and change if needed. Pay attention especially to server name setting. If you’re using database server located on another machine, type its name or IP address for server name, and check whether the other connection settings are valid.



9. If this is the first time use of *Smart Flow* for you or your organization, you first have to create the needed databases. If you’re using your own PC for database server, then click the button *OK* and you will be asked whether to create needed databases first. Answer to that question with *Yes*. If you are using another machine for a database server, check the database connection settings and click the button *Create DB*. Enter the corresponding database admin user name and password (if needed), select the language you like to use for the database, and click the button *OK*. This will create all needed *Smart Flow* databases and will forward you to login screen.



10. On login screen type in user name *admin* and password *issvarna*, in order to enter *ISS Smart Flow* for the first time. You can also choose the language to use for *Smart Flow* graphical interface. Then click the button *OK*. If everything is correct the *Smart Flow* main screen will appear. Do not forget to change *admin* password – use the menu *Manage / Change Password*.

